



## D1.1 Project Handbook

Version N°2

Updated after Slovenia Meeting

2-3 December 2010

This handbook is a reference document for finding documents and contact details, remembering deadlines and deliverables issues

Page 2-3 Deadlines until march 2011

Page 3-4 Project Deliverables Planning

Page 5-6 Project updated schedule

Page 7-13 Partners roles and contact details

Page 14-17 Slovenia Meeting minutes and attendance

Access to private website :


<http://sites.google.com/site/efficient20/>

login : efficient20.iee@gmail.com

password : fuel2009

**Contact person :**

**Sophie MERLE**

Efficient20 • AILE 

73, rue de Saint-Brieuc  
CS 56520

35065 Rennes Cedex

02 99 54 63 23

A yellow case means you are concerned by the deadline.  
 Write "done" and it will turn green  
 Write "delay" and it will turn orange.

				AILE	RURALNET	ENAMA	KWF	PIMR	FJ-BLT	APEA	CRA-W	KGZS	AIS	CHB35	CEMAGREF
Who	WP	When	What	AILE	NET	JAMA	KWF	PIMR	J-BLT	APEA	RA-W	KGZS	AIS	HB35	REF
<b>PERMANENT DEADLINES</b>															
All	WP1	Permanent	Keep tracks of the time and expenses spent, as well as the activities undertaken for the project	x	x	x	x	x	x	x	x	x	x	x	x
All	WP6	Permanent	Send APEA the monthly report D6.1	x	x	x	x	x	x	x	x	x	x	x	x
All	WP1	Permanent	Inform SM for all budget modification	x	x	x	x	x	x	x	x	x	x	x	x
All		Permanent	Put "EFF20" in each email's subject	x	x	x	x	x	x	x	x	x	x	x	x
<b>RED DEADLINES</b>															
All	WP1	30-Nov-10	Fill a Cost Statement form (see WP1>templates on google site) and send it to AILE with october timesheet	done	done	delay	done	done	done	done	delay	delay	delay	delay	delay
All	WP1	31-Jul-10	Make the consortium agreement signed by the representative of his organisation and send it to AILE		delay	done	done	?	done	done	delay	done	delay	delay	delay
All	WP4	1-Sep-10	D4.1 Send to KGZS the list of 4 to 5 major events you will attend for the European communication campaign	delay	delay	delay	done	delay	delay	delay	delay	done			
All	WP6	31-Dec-10	D 6.3 Complete the 50 questionnaires among farmers and send the results to APEA	delay	delay		done	delay	delay	done	delay		delay		
<b>DEADLINES SET UP DURING SLOVENIA MEETING</b>															
All	WP1	15-Dec-10	Note the date of 19 and 20 May for next meeting in UK	x	x	x	x	x	x	x	x	x	x	x	x
RURALNET	WP2	15-Dec-10	Send missing items in D2.1 (Database spec) to CHB35		x										
All	WP3	15-Dec-10	Send feedback to ENAMA (D3.1) PIMR (D3.2) and KWF (D3.3)	x	x	x	x	x	x	x	x	x	x	x	x
AILE	WP1	15-Dec-10	Send answer to financial questions raised	x											
CHB35 - FJ BLT	WP2	20-Dec-10	Circulate an improved version of Excel Spreadsheet (after a first review with FJ BLT) to all partners						x					x	
RURALNET	WP2	20-Dec-10	Launch a call for tender for database creation		x										
AILE	WP3	20-Dec-10	Circulate an improved version of Pilot group Fact sheet with action plan template	x											
APEA	WP4	20-Dec-10	Circulate improved version of Associated Membership Agreement						x						
AIS	WP4	20-Dec-10	Circulate improved version of D4.3									x			
KGZS	WP5	20-Dec-10	Circulate first version of D5.1								x				

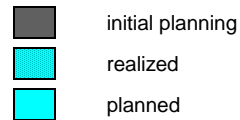
RURALNET	WP5	20-Dec-10	Create improved version of EU and national websites and make appointments for first post web training session		x													
AILE	WP7	31-Dec-10	Project slides	x														
All	WP2	15-Jan-11	Send comments and feedback on Spreadsheet to CHB35	x	x	x	x	x	x	x	x	x	x	x	x	x	x	x
CHB35	WP2	15-Jan-11	Circulate an improved version of D2.1 (Database specifications) to all partners														x	
All	WP3	15-Jan-11	Send to AILE filled pilot group Factsheet to complete D3.10	x	x	x	x	x	x	x	x	x	x	x	x	x	x	x
KGZS	WP4	15-Jan-11	Circulate improved version of D4.1											x				
APEA	WP6	15-Jan-11	Circulate new version of D6.1 with website posts, press and event reporting							x								
All	WP1	30-Jan-11	Send inputs for Progress report and finalize all included deliverables	x	x	x	x	x	x	x	x	x	x	x	x	x	x	x
All	WP2	30-Jan-11	Send comments and feedback on D2.1 to CHB35	x	x	x	x	x	x	x	x	x	x	x	x	x	x	x
All	WP4	30-Jan-11	Send feedback to APEA (Agreement) AIS (D4.3) and KGZS (D4.1)	x	x	x	x	x	x	x	x	x	x	x	x	x	x	x
All	WP5	30-Jan-11	Think about stand equipment	x	x	x	x	x	x	x	x	x	x					
All	WP5	30-Jan-11	Finalise national website set up with at least 4 posts	x	x	x	x	x	x	x	x	x	x					
All	WP6	30-Jan-11	Send feedback to APEA on D6.1	x	x	x	x	x	x	x	x	x	x	x	x	x	x	x
All	WP2	28-Feb-11	As soon as the Spreadsheet is validated, begin the feeding with pilot group and former data	x	x	x	x	x	x	x	x	x	x	x	x	x	x	x
RURALNET	WP2	30-Mar-11	Database online		x													

WP	Lead participant	Month of completion <sup>h)</sup>		Deliverable N°	Deliverable name <sup>a)</sup>	Percentage of completion	Type of deliverable <sup>b)</sup>	Format <sup>c)</sup>
3	AILE	2	June-10	D3.10	List of pilot group members	80%	30 pages report (1page per pilot group)	Electronic
1	AILE	2	June-10		KICK OFF MEETING	100%		
1	AILE	3	July-10	D1.1	Project handbook	75%	Report	Electronic
1	AILE	3	July-10	D1.2	Consortium agreement	50% - Signatures missing	Report	Paper
6	APEA	3	July-10	D6.1	Monitoring and Evaluation Framework	100%	10 pages report	Electronic
6	APEA	3	July-10	D6.3	Questionnaire Guidelines	100%	10 pages report	Electronic
5	KGZS	4	August-10	D5.1	Communication plan	10%	report	Electronic
2	CHB35	6	October-10	D2.1	Database technical specifications	60%	30 pages Working paper	Electronic
3	AILE/CUMA	6	October-10	D3.5	Pilot groups action plan guidelines	80%	10 pages report	Electronic
4	KGZS	6	October-10	D4.1	General programme of European Communication campaign	50%	30 pages report	Electronic
5	RURALNET	6	October-10	D5.5	Project website	25% - structure to finalize + content to fill	Website	Online
6	APEA	6	October-10	D6.4	Questionnaire Analysis by country	20% waiting for questionnaires	20 pages report	Electronic
1	AIS KGZS	7	November-10		COORDINATING MEETING			
4	AIS	7	November-10	D4.3	General programme and recommendations for active Networking	10%	10 pages report	Electronic
5	AILE/CUMA	7	November-10	D5.2	Graphic charter for the project + leaflets, brochure and stand equipment templates	75%	Graphic material	Electronic
3	ENAMA	7	November-10	D3.1	General guidelines provided by machinery experts	30%	20 pages report	Electronic
3	PIMR	8	December-10	D3.2	Questionnaire to evaluate the understanding and comfort of use and to analyse the motivations of farmers for eco-driving	30%	2 pages questionnaire	Electronic
2	RURALNET	9	January-11	D2.2	Database with user guide and training programme	Delayed month 11	Web Tool	Online
1	AILE	10	February-11		Progress Report			
3	AILE/CUMA	12	April-11	D3.6	Pilot groups action plans		1 page factsheet	Electronic
3	PIMR	12	April-11	D3.4	Questionnaire analysis		10 pages report	Electronic
3	KWF	12	April-11	D3.3	Detailed review of embedded computers in farming and forestry tractors with improvement preconisations		10 pages report	Electronic
2	RURALNET	12	April-11	D2.2	Database with user guide and training programme		Web Tool	Online
3	FJ-BLT	12	April-11	D3.8	Training handbook and documents		Training material	Electronic + paper
1	RURALNET	13	May-11		COORDINATING MEETING			
2	RURALNET	18	October-11	D2.6	Database		Web Tool	Online
2	RURALNET	18	October-11	D2.3	Database basic statistics (number of inputs per country / per farming activity)		1 page factsheet	Online
2	CHB35	19	November-11	D2.4	Database technical reports		4 pages factsheets	Online
2	CEMAGREF	19	November-11	D2.5	Reports on data interpretation		20 pages reports	Electronic
1	AILE	19	November-11		Interim Report			
1	APEA	20	December-11		COORDINATING MEETING			
3	FJ-BLT	24	April-12	D3.9	General report on training sessions		20 pages report	Electronic
4	KGZS	24	April-12	D4.2	Report and press release on the communication campaign		20 pages report	Electronic

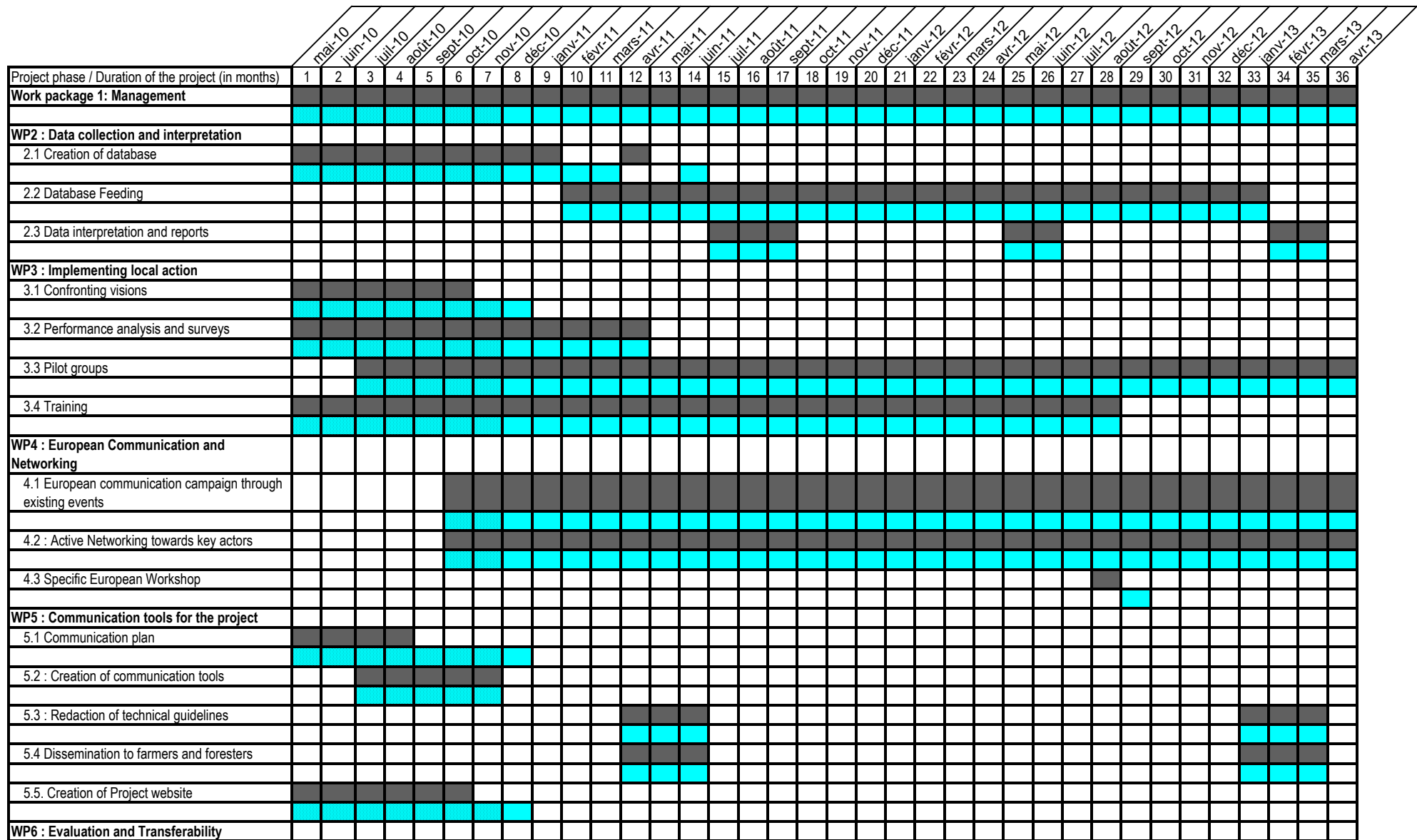
2	RURALNET	24	April-12	D2.3	Database basic statistics (number of inputs per country / per farming activity)		1 page factsheet	Online
1	AILE	28	August-12		Progress Report			
2	CHB35	26	June-12	D2.4	Database technical reports		4 pages factsheets	Online
1	FJ-BLT	28	August-12		COORDINATING MEETING			
5	CRAW	29	September-12	D5.3	Technical guidelines and best practices for farmers		Brochure	Electronic + paper
5	CRAW	29	September-12	D5.4	Technical guidelines and best practices for counsellors		Brochure	Electronic + paper
3	AILE/CUMA	30	October-12	D3.7	General report on pilot group fuel reduction		20 pages report	Electronic
2	RURALNET	30	October-12	D2.3	Database basic statistics (number of inputs per country / per farming activity)		1 page factsheet	Online
3	PIMR	32	December-12	D3.4	Questionnaire analysis		10 pages report	Electronic
6	APEA	33	January-13	D6.3	Questionnaire Guidelines		10 pages report	Electronic
1	PIMPR	35	March-13		FINAL MEETING			
4	AIS	35	March-13	D4.4	Report on results of Networking		20 pages report	Electronic
3	KWF	35	March-13	D3.3	Detailed review of embedded computers in farming and forestry tractors with improvement preconisations		10 pages report	Electronic
2	CEMAGREF	35	March-13	D2.5	Reports on data interpretation		20 pages reports	Electronic
3	ENAMA	35	March-13	D3.1	General guidelines provided by machinery experts		20 pages report	Electronic
2	CHB35	35	March-13	D2.4	Database technical reports		4 pages factsheets	Online
1	AILE	36	April-13	D1.3	Final Publishable Report		Report	Paper
6	APEA	36	April-13	D6.2	Final Evaluation Report		Report	Electronic
4	KGZS	36	April-13	D4.2	Report and press release on the communication campaign		20 pages report	Electronic
6	APEA	36	April-13	D6.4	Questionnaire Analysis by country		20 pages report	Electronic
1	AILE	38	June-13		Final Report			
Extrait de page 43 annexe 1 avril 2010								
			2 échéances					
			3 échéances					
			Meeting					

**EFFICIENT20**

**Planning management**



Updated 08/12/2010







Projects partners and contact details

Updated 08/12/2010

AILE  
73 rue de St Brieuc  
CS 56520 35065  
RENNES CEDEX FRANCE  
tel : +33 2 99 54 63 23  
fax : +33 2 99 54 85 49  
<http://www.aile.asso.fr/>  
<http://www.ouest.cuma.fr>

Main role in the Consortium :

Co-ordinator of the project  
Coordination of WP1, 5 and 7

AILE will associate its members, a network of farmer's cooperative for machinery, for the implementation of :

- Pilot groups monitoring
- Eco-driving training sessions
- Communication events



Sophie Merle  
T : +33 2 99 54 85 47  
M : +33 6 85 22 34 12  
sophie.merle@aile.asso.fr



Jacques Bernard, fuel  
consumption technician  
T : +33 2 99 54 85 50  
M : +33 6 75 20 91 60  
jacques.bernard@aile.asso.fr



Béatrice Mégret, project  
assistant  
T: +33 2 99 54 63 23  
beatrice.megret@aile.asso.f  
r





Ruralnet Futures  
5 Lower Cape  
Warwick  
CV34 5DP  
United Kingdom  
tel :+44 (0) 843 357 1618

[www.ruralnetfutures.co.uk/](http://www.ruralnetfutures.co.uk/)

Main role in the Consortium :

Coordination of WP2  
Creation, maintenance and training of the online database tool  
Creation of the project's website

**EFFICIENT 20**



Intelligent Energy Europe

Rob Mannion, Managing  
Director  
T : +44 843 357 1618  
M : +44 7813 325 486  
robmannion@ruralnetfutures  
.co.uk

**EFFICIENT 20**



Intelligent Energy Europe

David Ellis, Project Manager  
T : +44 843 357 1618  
M : +44 7985 004353  
d.ellis@ruralnetfutures.co.uk

ENAMA - IT  
 Ente Nazionale per la Meccanizzazione Agricola  
<http://www.enama.it/>

Main role in the Consortium :  
 Coordination of expertise (task 3.1)  
 Database feeding  
 Eco driving sessions



Giulio Fancello  
 ENAMA  
 T : +39 347 1566041  
 giulio.fancello@enama.it



Claudio Pepe

KWF - DE  
 Kuratorium für Waldarbeit und Forsttechnik  
<http://www.kwf-online.org/>

Main role in the Consortium :  
 Embedded computers review (task 3.2)  
 Pilot groups of foresters + Database feeding  
 Eco-driving sessions



Ute Seeling  
 ute.seeling@kwf-online.de



Günther Weise  
 T : +49 607 878 520  
 guenther.weise@kwf-online.de

David Rosenbach  
 Tel. +49 607 878 545  
 Fax +49 607 878 539  
[David.Rosenbach@kwf-online.de](mailto:David.Rosenbach@kwf-online.de)

PIMR - PO  
 Polish Industrial Institute of Agricultural Engineering  
[http://www.entam.net/partners.php?id\\_scheda=269](http://www.entam.net/partners.php?id_scheda=269)

Main role in the Consortium :  
 Database feeding  
 Pilot group  
 Communication and Networking

**EFFICIENT 20**



Intelligent Energy Europe

Jan Radniecki  
 T : +48 618 712 246  
 radjan@pimr.poznan.pl

**EFFICIENT 20**



Intelligent Energy Europe

Julia  
 Gościańska  
 T : +48 618 712 246  
 julgosia@pimr.poznan.pl

FJBLT - AT  
 FRANCISCO JOSEPHINUM WIESELBURG  
<http://blt.josephinum.at/>

Main role in the Consortium :  
 Coordination of WP3  
 Eco-driving training sessions  
 Database feeding  
 Pilot group monitoring

**EFFICIENT 20**



Intelligent Energy Europe

Franz Handler  
 T: +43 7416 52175-15  
 franz.handler@josephinum.a  
 †

APEA - ES  
 Agencia Provincial de la Energía de Ávila  
<http://www.diputacionavila.es/fcst/apea/>

Main role in the Consortium :  
 Coordination of WP4 and WP6  
 Pilot groups of farmers  
 Communication and Networking



Alberto LOPEZ  
 T : +34 920 206 230  
 alopez@diputacionavila.es

CRAW - BE  
 Centre Wallon de Recherche Agronomique  
<http://www.cra.wallonie.be/>

Main role in the Consortium :  
 Pilot groups of farmers  
 Database feeding  
 Communication and Networking



Olivier Miserque  
 T : +32 81 627 155  
 miserque@cra.wallonie.be

KGZS - SI  
Chamber of Agriculture and Forestry of Slovenia  
<http://www.kgzs.si/>

Main role in the Consortium :  
Communication and Networking



Sasa Hocevar  
T : +386 1 513 66 94  
sasa.hocevar@kgzs.si



Martin will replace Sasa who will be in maternity leave for one year

AIS - SI  
Agricultural Institute of Slovenia  
<http://www.kis.si/pls/kis/kis.web?m=0&j=EN>

Main role in the Consortium :  
Pilot group of farmers  
Data collection for tractor fuel consumption



Viktor Jejčič  
T : +386 1 28 05 262  
Viktor.Jejcic@kis.si



Tomaž POJE  
tel. dir.: ++386-(0)1-2805100  
tel. nc: ++386-(0)1-2805262  
fax.: ++386-(0)1-2805255  
tomaz.poje@kis.si

CHB35 - FR  
Chambre d'Agriculture d'Ille et Vilaine  
[Site](#)

Main role in the Consortium :  
Technical specifications for database



Pierre Havard  
T : +33 2 99 39 72 93  
M : +33 6 15 16 04 25  
pierre.havard@ille-etvilaine.chambagri.fr



Didier Debroize  
T: +33 02.99.39.72.94  
M : +33 6.25.97.87.23  
Didier.Debroize@ille-etvilaine.chambagri.fr

CEMAGREF - FR  
Institut de recherche pour l'ingénierie de l'agriculture et de l'environnement  
<http://www.cemagref.fr/>

Main role in the Consortium :  
Data interpretation / ENTAM Member



Frédéric Vigier  
T : +33 1 40 96 61 54  
frederic.vigier@cemagref.fr



Stéphanie Lacour  
T : +33 1 40 96 62 89  
stephanie.lacour@cemagref.fr



## Meeting of Project EFFICIENT20

Ljubljana, 2-3 December 2010

### Minutes of the meeting

These minutes contain the main decisions and deadlines made during the meeting. The slides presented by each Work Package Leader are annexed to the minutes

#### **WP1 Management of the project**

1.1. People involved in the project : Sasa Hocevar (KGZS) will be in maternity leave from end of January 2011 for one year. She will be replaced by Martin, who is working in a local agricultural institute related to KGZS.

Concerning the eligible costs, three solutions can be explored :

- Local institute becomes a subcontractor of KGZS
- Martin can be declared as an in house consultant
- The partnership shifts from KGZS to Institute.

1.2 Project's meeting : next meeting will be held in UK on the 19 and 20<sup>th</sup> May 2010. All the partners will participate in the meeting. Please note the date or tell us if you have a big problem with this date.

1.3. Progress report (PR) is due at the end of February 2011. All due deliverables have to be annexed to the PR :

Number	Title	Lead participant	Due for	
D1.1	Project handbook	AILE	3	July-10
D1.2	Consortium agreement	AILE	3	July-10
D2.1	Database technical specifications	CHB35	6	October-10
D2.2	Database with user guide and training programme	RURALNET	9	January-11
D3.1	General guidelines provided by machinery experts	ENAMA	7	November-10
D3.10	List of pilot group members	AILE	2	June-10
D3.2	Questionnaire to evaluate the understanding and comfort of use and to analyse the motivations of farmers for eco-driving	PIMR	8	December-10
D3.5	Pilot groups action plan guidelines	AILE/CUMA	6	October-10
D4.1	General programme of European Communication campaign	KGZS	6	October-10
D4.3	General programme and recommendations for active Networking	AIS	7	November-10
D5.1	Communication plan	KGZS	4	August-10
D5.2	Graphic charter for the project + leaflets, brochure and stand equipment templates	AILE/CUMA	7	November-10
D5.5	Project website	RURALNET	6	October-10
D6.1	Monitoring and Evaluation Framework	APEA	3	July-10
D6.3	Questionnaire Guidelines	APEA	3	July-10
D6.4	Questionnaire Analysis by country	APEA	6	October-10

Efficient20 • AILE

73, rue de Saint-Brieuc  
CS 56520  
35065 Rennes Cedex

02 99 54 63 23



Christof Marx reminds that the PR has to remain short and factual. We do not need to "sell" the project or explain that everything is perfect but only facts, achievements and obstacles met.

A template will be sent to all partners for feeding. The WP leaders will review their respective parts.

#### Financial Issues

An indemnity application form has been validated by EACI and is available on private website under WP1>Templates. It is important to describe well the activity for which indemnity is claimed. For example "Organisation of metering campaign" "Fuel metering in the fields" "Participation to pilot group meeting"

APEA and RURALNET wonder if it is possible to replace indemnities by extra equipment or maintenance costs. Christof Marx thinks it will be difficult without amendment. The issue for APEA is that as a public organisation they cannot make cash payment without public call for subsidies.

For governmental organisation who cannot recover VAT : is it possible to provide a document to certify the organisation CANNOT recover VAT in order to make it eligible?

Timesheet management : it is important to keep tracks of work on each WP. Time spent during meetings can be split between WPs.

Deadlines :

All	30-Nov-10	Fill a Cost Statement form (see WP1>templates on google site) and send it to AILE with october timesheet
All	31-Jul-10	Make the consortium agreement signed by the representative of his organisation and send it to AILE
All	15-Dec-10	Note the date of 19 and 20 May for next meeting in UK
All	30-Jan-11	Send inputs for Progress report and finalize all included deliverables
AILE	31-Dec-10	Send answer to financial questions raised

### **WP2 Data collection and interpretation**

2.1 Database creation The planning of database creation encountered some delay. The new deadlines set up during the meeting will allow to produce an online tool at the end of march but it is very important that all the partners react immediately to the requests for feedback.


CHB35 has created a Spreadsheet to facilitate the data capture for Pilot Groups Leaders. It is anticipated that project partners will fulfil the role of PGLs, entering measurements made by farmers (on paper forms) into the spreadsheet.

Here are the main modifications decided compared to the version presented :

- the operations will be split in 8 different types (soil preparation, fertilising & crop protection, manure & slurry spreading, harvesting, transport, forage distribution, ...)
- to avoid useless capture with insufficient data, there will be mandatory and optional fields for each type of operation
- basic forms will be proposed for each type of operation, but it is not mandatory to use them if you have already send the forms to your pilot groups. Just check if the mandatory data are recorded

Globally, stress has been put on the fact that the database has to remain simple, and has to be able to show the progress of pilot groups. That is why it is important that pilot group register operations with and without fuel saving solutions in order to be able to compare "before" and "after" situations. This will be the evaluation point of EACI.

The spreadsheet shows how the database will be functioning. It is important that each partner spends time on studying it as soon as it is available and before the 15<sup>th</sup>

Efficient20 • AILE 

73, rue de Saint-Brieuc  
CS 56520  
35065 Rennes Cedex

02 99 54 63 23





of January to be able to finalize the database. This Spreadsheet will be available in Excel 2000 format. Be careful not to save it in a later version so that everybody is able to open the document.

**2.2 Database feeding** : the feeding will be possible online (via the website) through an online form or through importing the Excel Spreadsheet. Older data can also be integrated.

**2.3 Reports** : the online reports will be established thanks to basic queries. Data published will be average + standard deviation and kept anonymous (no names, only the country and the region will be displayed).

The database is not intended to be a research tool. Instead its role is to collect and store fuel consumption data and provide basic comparison of data. More sophisticated analysis will be carried out by Cemagref, using data extracted from the database.

The database should help measure progress, identifying where further fuel consumption data is required (for example for a particular category of operation) to yield a statistically meaningful result.

**Deadlines**

CHB35 - FJ BLT	20-Dec-10	Circulate an improved version of Excel Spreadsheet (after a first review with FJ BLT) to all partners
RURALNET	15-Dec-10	Send missing items in D2.1 (Database spec) to CHB35
All	15-Jan-11	Send comments and feedback on Spreadsheet to CHB35
CHB35	15-Jan-11	Circulate an improved version of D2.1 (Database specifications) to all partners
All	30-Jan-11	Send comments and feedback on D2.1 to CHB35
RURALNET	20-Dec-10	Launch a call for tender for database creation
RURALNET	30-Mar-11	Database online
All	28-Feb-11	As soon as the Spreadsheet is validated, begin the feeding with pilot group and former data

**WP3 Implementing local action**

3.1 and 3.2 : ENAMA and PIMR have circulated first drafts of D3.1 and 3.2. Please send them feedback as soon as possible. KWF is also waiting for the name of the 10 most popular tractor brands in your country.

**3.3 Pilot groups**

Some partners had difficulties motivating pilot groups. It is proposed to focus on some operations and solutions, chosen among the most significant for the group. For example, transport +tyre pressure adjustment, soil preparation+ecodriving, hay management+ adapt the tractor's power to the implement.

The main goal of fuel recording is to allow comparison between operations. It is important to plan recording in similar conditions (same day or very close conditions) with and without fuel saving solutions.

3.4 : you will be able to download the training handbook from the private website.

**Deadlines**

All	15-Dec-10	Send feedback to ENAMA (D3.1) PIMR (D3.2) and KWF (D3.3)
AILE	20-Dec-10	Circulate an improved version of Pilot group Fact sheet with action plan template
All	15-Jan-11	Send to AILE filled pilot group Factsheet to complete D3.10

Efficient20 • AILE

73, rue de Saint-Brieuc  
CS 56520  
35065 Rennes Cedex

02 99 54 63 23



## **WP4 European communication campaign**

### 4.1 Organisation of communication campaign

The main goal of D4.1 is to set up the list of the 40 events of the campaign + make recommendations for the campaign. One important point is that attendance on a stand is not enough to be considered as one of the 40 events. You have to plan an activity programme in accordance with the event : open field activities if possible, demonstrations, ecodriving competition, quiz for the farmers, pilot group expression, conference... Your presence to the event must also be advertised, and contact with the press must be made in order to reach our target of 120 press articles and TV/radio coverage.

### 4.2 Active Networking

Associated members to the Network can be farming development organisation, schools or universities, but the main target is the tractors and implements manufacturers and dealers.

The potential member has to make an application for joining the Network. To keep it very simple, the online application will be possible. An attractive application form will be produced by APEA.

There is no particular condition to join the network, other than being willing to reduce fuel consumption and keep the project partners updated with news. But only the valuable actions will be advertised.

What is a valuable action ? It has to include technical, objective information on fuel savings, in a concrete manner. For example : for a tractor dealer, organise a training session on fuel savings for its sales engineers. For a tractor manufacturer, produce a simple version of manual for onboard computer, including how to display instantaneous and cumulative consumption. For a school or a rural association, organising a fuel saving competition during open days.

Actions we do not want to advertise : actions with only commercial content ("You will save fuel if you use my tyres rather than other ones" instead of "I explain you how to set up the tyre pressure to save fuel"), actions with poor content (a partner was present on a fair and had EFFICIENT20 documents on his stand), and also actions with no proofed results (Pantone engines, fuel additives, ...)

Each partner is responsible to evaluate if an action is valuable, but do not hesitate to ask the consortium if you have a doubt.

The target of Associated members is 60 during the project, which is low considering there is no condition to join the network, but is significant if we think about 60 partnership actions we would be proud to advertise.

Deadlines :

All	1-Sep-10	D4.1 Send to KGZS the list of 4 to 5 major events you will attend for the European communication campaign
APEA	20-Dec-10	Circulate improved version of Associated Membership Agreement
AIS	20-Dec-10	Circulate improved version of D4.3
KGZS	15-Jan-11	Circulate improved version of D4.1
All	30-Jan-11	Send feedback to APEA (Agreement) AIS (D4.3) and KGZS (D4.1)

## **WP5 Communication tools**

### 5.1 Communication plan

KGZS will circulate a first draft of D5.1 which will include :

- for each country : list of press and TV/radio contacts
- Guidance to establish a press release/press conference and check list to organise an event

Efficient20 • AILE

73, rue de Saint-Brieuc  
CS 56520  
35065 Rennes Cedex

02 99 54 63 23



## 5.2 Communication tools

You received the graphic charter of the project. You can use it whenever you need it. There will be information on the website you can copy/translate for your documents.

Think also about establishing communication items for your stand equipment (banners, flags, panels...)

The logo of IEE has changed. Please think about changing the logo in your word and Indesign presentations :

[http://ec.europa.eu/energy/intelligent/implementation/communication\\_en.htm#logo](http://ec.europa.eu/energy/intelligent/implementation/communication_en.htm#logo)

## 5.5 Website

RURALNET will publish a improved version of EU site and 9 versions of national websites. The main dynamic parts will be classified in 5 categories : database outputs, tips to reduce fuel consumption, events and network (news on associated partners & valuable actions). RURALNET will propose a web training session to each participating country to create your first posts.

The objective is to publish one post per month and per country (on national and European sites). This will be added to Evaluation questionnaire D6.1

The idea of having an expert knowledge bank (like a forum with expert answers) will be studied and presented at the next meeting in UK.

Deadlines :

KGZS	20-Dec-10	Circulate first version of D5.1
RURALNET	20-Dec-10	Create improved version of EU and national websites and make appointments for first post web training session
All	30-Jan-11	Think about stand equipment
All	30-Jan-11	Finalise national website set up with at least 4 posts

## WP6 Evaluation

### 6.1 Evaluation and Data collection

The monthly questionnaires are functioning. It is really important to fill them regularly, as in a European project, reporting is as important as performing an action. It is also important to send separate Excel files for events, contacts and information requests.

The questionnaire will be improved with template for reporting events and press articles + website posts.

### 6.2 Awareness questionnaire

Some partners did complete the 50 questionnaires, but the majority has not performed them. It is important to do it soon in the project.

Deadlines

All	31-Dec-10	D 6.3 Complete the 50 questionnaires among farmers and send the results to APEA
APEA	15-Jan-11	Circulate new version of D6.1 with website posts, press and event reporting
All	30-Jan-11	Send feedback to APEA on D6.1

## WP7 IEE dissemination activities

A document on IEE Common performance indicators has been sent to EACI.

Efficient20 • AILE

73, rue de Saint-Brieuc  
CS 56520  
35065 Rennes Cedex

02 99 54 63 23



Slides and presentation of the project are updated on the IEE database.



Efficient20 • AILE 

73, rue de Saint-Brieuc  
CS 56520  
35065 Rennes Cedex

02 99 54 63 23

